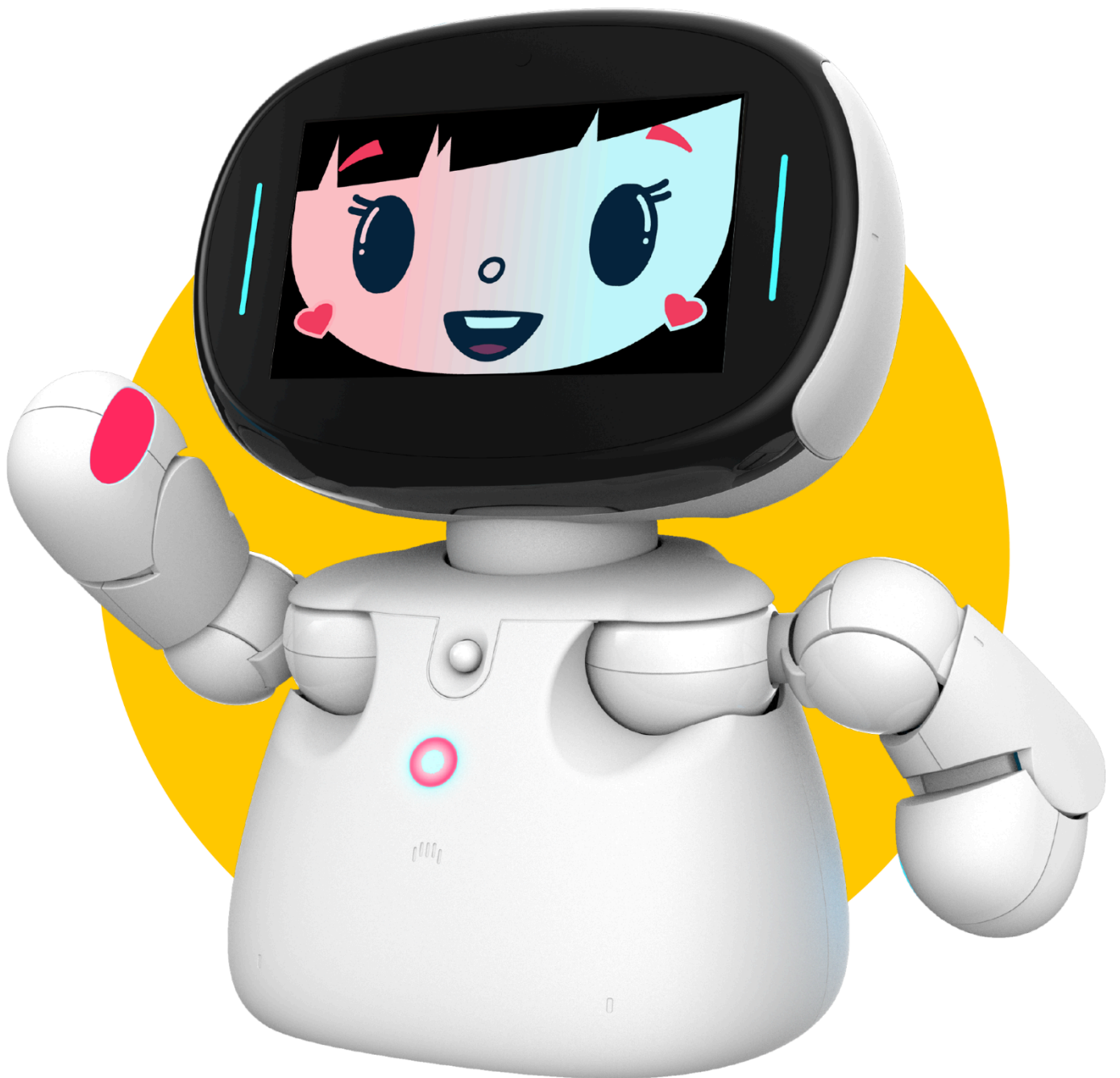


CURiOSITY

E D U C A T I O N





Quick Guide to Aico: Your Social Robot

WELCOME TO THE WORLD OF LEARNING WITH AICO!

Aico is a social robot that makes **learning English fun** for children at home and in kindergartens.

Learning Components:

- Bite-Sized Learning - Each lesson is 5-10 minutes long.
- Interactive Approach - Combines play, fun, touch, and learning.
- Flexible Engagement - Recommended 3 sessions per week or more.

Getting Started with Aico

Unboxing & Charging Aico

1. **Open the Box:** Carefully remove Aico from the packaging and place it on a stable surface.
2. **Charging Indicator:** Connect to the original charger and wait for the charging indicator on the screen to signal that Aico is charging.
3. **Full Charge:** Allow Aico to charge fully before first use.
4. **Original Charger:** Aico can only be charged with the original charger that comes in the box. Please make sure to safeguard this charger for continual use of Aico.

Create an account on the AicoFamily app.

In order to begin using Aico, you must first sign up to the AicoFamily app and sign up at least one child.



1. [Scan](#)
2. Sign up to Aico Family and create your **family account**
3. Sign up and create your **child's profile** to unlock personalized learning.

Powering On Aico

4. **Turn Aico on** by pressing and holding (for 2 seconds) the power button on its head. You will hear a startup sound and see the LED lights activate.

Connecting Aico to Wi-Fi

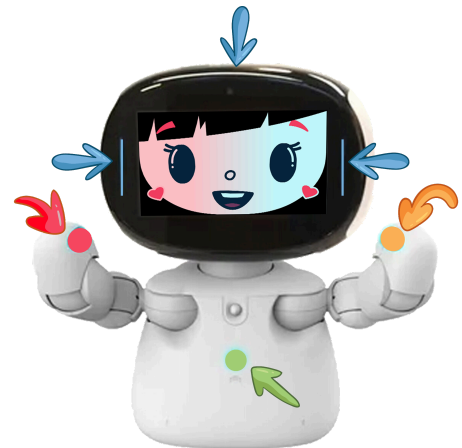
Aico needs Wifi to operate. Please connect Aico to the [Wi-Fi](#) network: navigate to the Wi-Fi settings and select your home network. Enter the password when prompted.



Engaging with Aico

Aico's screen is a touch screen used for high-level interactions. However, for child interaction with Aico, she uses 6 advanced sensors to receive input from your child:

- **Head Sensors - three** - one on each side ("ears") and one on the top of the head.
- **Hand Sensors - two** - ("hands")
- **Belly Sensor - one**



Aico is a learning companion, and most of Aico's interaction with children will be done using these sensors.

Note: Use a full palm, not just fingers, when touching Aico's sensors.

Important Safety Rules

Aico is your friend - treat her with care!

1. Do not throw, push, or pull Aico.
2. Use on a stable surface, preferably on the floor.
3. Keep away from liquids and ensure cables are out of reach of kids.

4. Wipe Aico's surface with a soft, dry cloth to keep it clean. Avoid using harsh chemicals.
5. Children should not lift Aico. When moving Aico from place to place, an adult should move her carefully and only pick her up from the bottom.

Troubleshooting Common Issues

- **Aico Won't Connect to Wi-Fi:** Ensure your Wi-Fi is functioning properly and that Aico is within range. Restart Aico and try connecting again.
- **Aico is Unresponsive:** If Aico becomes unresponsive, try restarting it by holding the power button for 10 seconds.

Having Issues?

Aico Tutorial videos

Contact:

 Visit us at: www.curiosity-robotics.com

 Contact us at: support@curiosity-robotics.com

**Learning with Aico starts
now – Have fun!**

